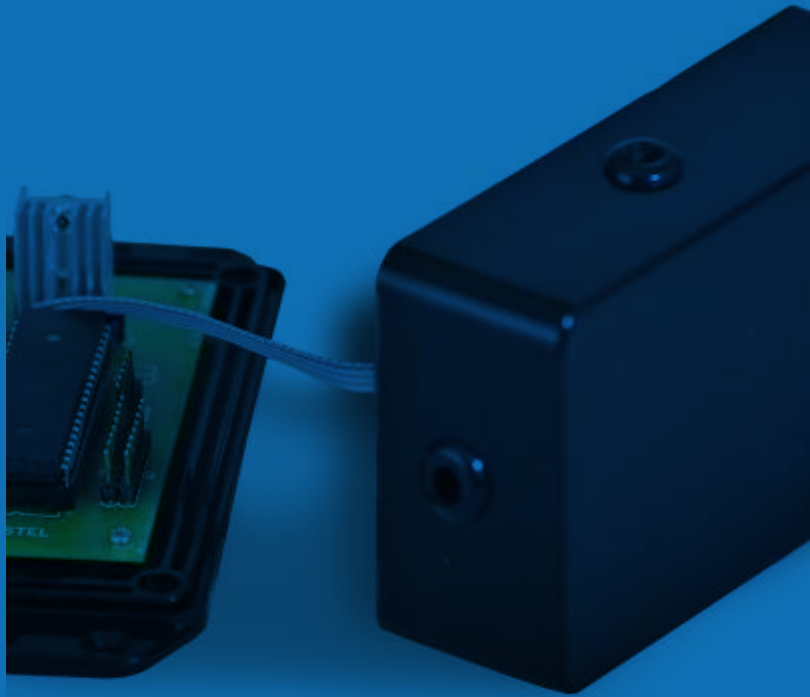


01 TRIM



TRIM (TETRA Radio Interface Module) is a stand-alone module capable of interfacing Motorola TETRA radios with external environments, digital I/Os and serial data communications. An effective control monitoring and data capture solution that is fast and reliable.

WADG

TRIM

TETRA Radio Interface Module

KEY BENEFITS

Getting the right information quickly is essential when responding to a public safety or commercial crisis. Based on efficient TETRA technology, TRIM (TETRA Radio Interface Module) communicates with radios in the field to generate alarms or capture serial data.

DESIGNED FOR VERSATILITY

TRIM is available in two versions for General I/O or Serial Communication. With an unlimited number of I/Os and OTA (Over the Air) configuration capabilities, the box can be used as a part of an alarm and control system or as a data capturing device, which can be connected to a barcode scanner or other serial scanners.

RELIABLE COMMUNICATIONS

The TRIM interface communicates with portable and mobile TETRA radios and instructs them to send SDSs corresponding to I/O configurations.

LIGHTWEIGHT AND DURABLE

The box is lightweight but heat and shock resistant for heavy duty use.

TRIM ALARM APP

This simple application allows users to view incoming alarms from the TRIM module.



KEY FEATURES

- Compact, weather-resistant box (9cm X 6cm X 3cm).
- Supports up to 256 alarm and control (input/output) dry contacts.
- All I/Os can be configured as N.O. (Normally Opened) or N.C. (Normally Closed) switches.
- Alarm messages can be sent several times and to several destinations.
- All configurations can be done over the air (OTA) via remote programming.
- Three LEDs provide visual information on the status of the TRIM.
- All alarms are stored in a database for historical purposes.
- Location of alarms shown on a building plan or Google Earth.
- Alarms must be acknowledged by user sending a confirmation to the TRIM box - shows time difference between received alarm and acknowledge

